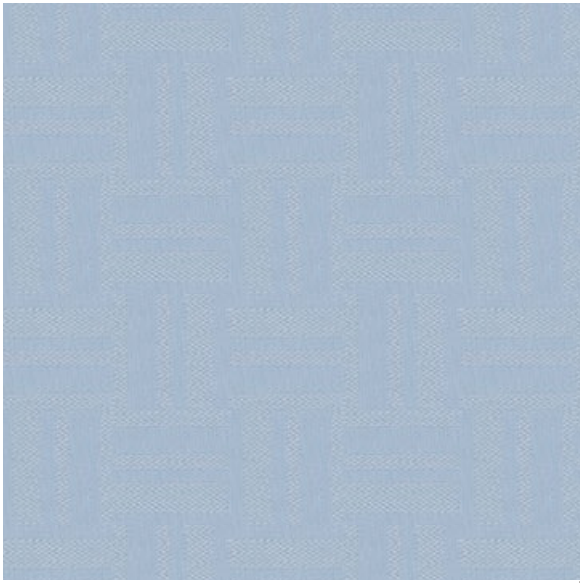
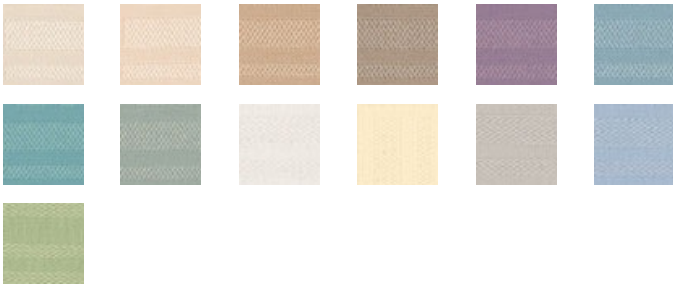


Bezel Peri



Available Colors



Pattern	Bezel
Color	Peri
Data Number	CM768115
Environments	Healthcare
Application	Cornice Board Drapery Privacy Curtain Shower Curtain Top of Bed
Content	POLYESTER
Flammability	NFPA 701 - Method 1
Abrasion	N/A
Width	76.00 inches
Orientation	Railroaded
Repeat	V: 2.00 inches H: 2.00 inches
ACT Certification	



Disclaimer: We have made an effort to provide fabric images that closely represent the fabric colors. However, due to all the possible variants --light source, monitor quality, etc. -- we can not guarantee that the fabric images accurately represent the true fabric colors. Please take this into consideration if you are trying to color match materials.

800.999.0400 | INTERIORS.STANDARDTEXTILE.COM

© 2024 Standard Textile Co., Inc. All Rights Reserved.

STANDARD
TEXTILE est. 1940